

## **Delegated Decision**

**6 January 2025**

**Temporary Traffic Regulation Order**

**Ordinary Decision/Key Decision No.**



---

## **Report of NEIGHBOURHOODS & CLIMATE CHANGE**

**Paul Anderson – Strategic Highways Manager, Technical Services**

### **Electoral division(s) affected:**

Aycliffe West Ward: Cllrs E Adam, K Robson

### **Purpose of the Report**

To consider a request for temporary traffic regulation by Order on 24 February 2025 for the purpose of new Virgin Media (Nexfibre) infrastructure installation works in the Williamfield Way area of Newton Aycliffe (Scheme NBU15).

### **Recommendation**

It is recommended that the Council exercises its powers under the Road Traffic Regulation Act 1984 to effect a Temporary Traffic Regulation Order to facilitate the proposed works

### **Background**

Works are proposed by Avonline to undertake new fibre installation works in the Williamfield Way area of Newton Aycliffe within the confines of the highway.

### **Options**

Other traffic management arrangements have been considered and the most appropriate method is for temporary road and footpath closures for up to 6 months.

### **Recommendation**

The recommendation is approved and that following, consultations with the Chief of Police, arrangements be made to progress the advertising of Public Notices and sealing of an Order.

---

**Contact:** Steven Galloway

Tel: 03000 267095

---

---

## **Appendix 1: Implications**

---

### **Legal Implications**

TTRO checked, prepared and advertised via Legal Services

### **Finance**

Costs to be charged to the scheme/applicant.

### **Consultation**

Chief of Police, Local Members, Public Transport Providers (via the Public Transport Team)

### **Equality and Diversity / Public Sector Equality Duty**

N/A

### **Human Rights**

No impact

### **Crime and Disorder**

N/A

### **Climate Change**

N/A

### **Staffing**

Network Management Team

### **Accommodation**

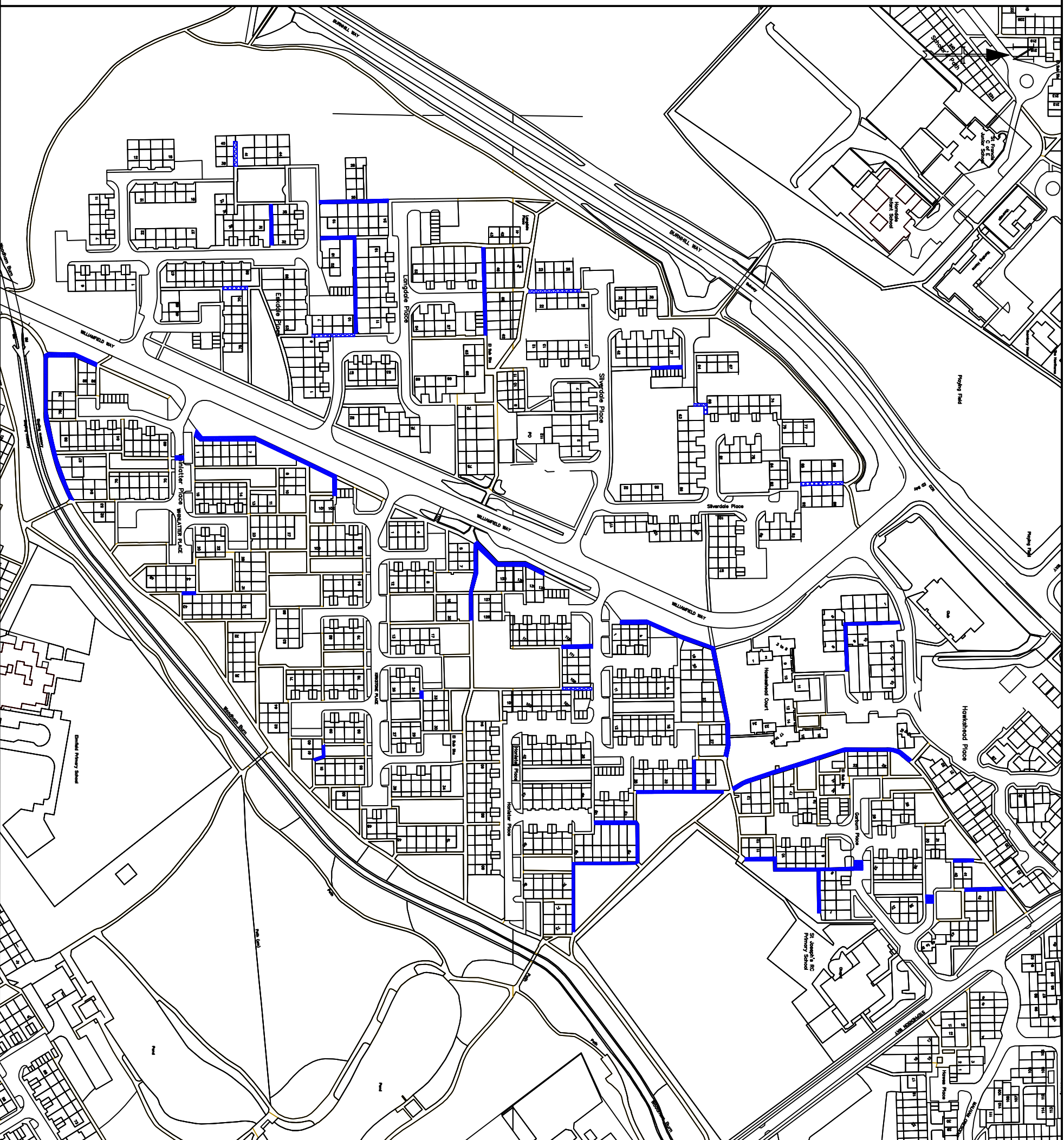
N/A

### **Risk**

N/A

### **Procurement**

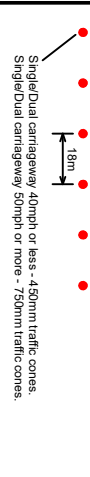
Advertising in a public newspaper with costs recharged to the scheme/applicant



**DETAIL B** (B)

- Single/dual carriageway 40mph or less - 450mm traffic cones, spacing 1.5m.
  - Single/dual carriageway 50mph or more - 750mm traffic cones, spacing 1.5m.
  - Dual carriageway national speed limit - 750mm traffic cones, spacing 1.5m, relaxation 5m.
- Notes:
- 1) During darkness, warning lights to BS EN 12352:2006 should be provided in accordance with Table A1.3 (Appendix 1).
  - 2) 45° tapers have 1.5m spacing, no relaxations.
  - 3) On allways and footpaths, standard and special roadworks, 1m relaxation.
  - 4) On allways and footpaths, standard and special roadworks, 1m relaxation 5m.
- for lead tapers and the fleeing wall of lane changes.

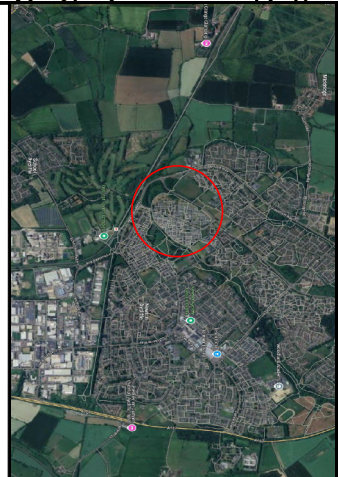
**DETAIL D** (D)



- Single/dual carriageway 40mph or less - 450mm traffic cones, spacing 1.5m.
  - Single/dual carriageway 50mph or more - 750mm traffic cones, spacing 1.5m.
  - Dual carriageway national speed limit - 750mm traffic cones, spacing 1.5m, relaxation 5m.
- Notes:
- 1) During darkness, warning lights to BS EN 12352:2006 should be provided in accordance with Table A1.3 (Appendix 1).
  - 2) Dual carriageway national speed limit - 750mm traffic cones, spacing 1.5m, relaxation 5m.
  - 3) Dual carriageway national speed limit - 750mm traffic cones, spacing 1.5m, relaxation 5m.

Two-way working	Standard: Normal traffic, including buses and HGVs	Restricted: Cars and light vehicles only
6.75 m minimum	6.75 m minimum	5.25 m minimum
3.25-5.50 m desirable width range	3.25-5.50 m desirable width range	3.25 m desirable minimum width
3.0 m absolute minimum	3.0 m absolute minimum	2.5 m absolute minimum

**Specials** -



**Notes** -

**KEY**

	Traffic sign
	Traffic cone
	Traffic signals to Diagram 3000.1
	Working Space
	Pedestrian Barrier